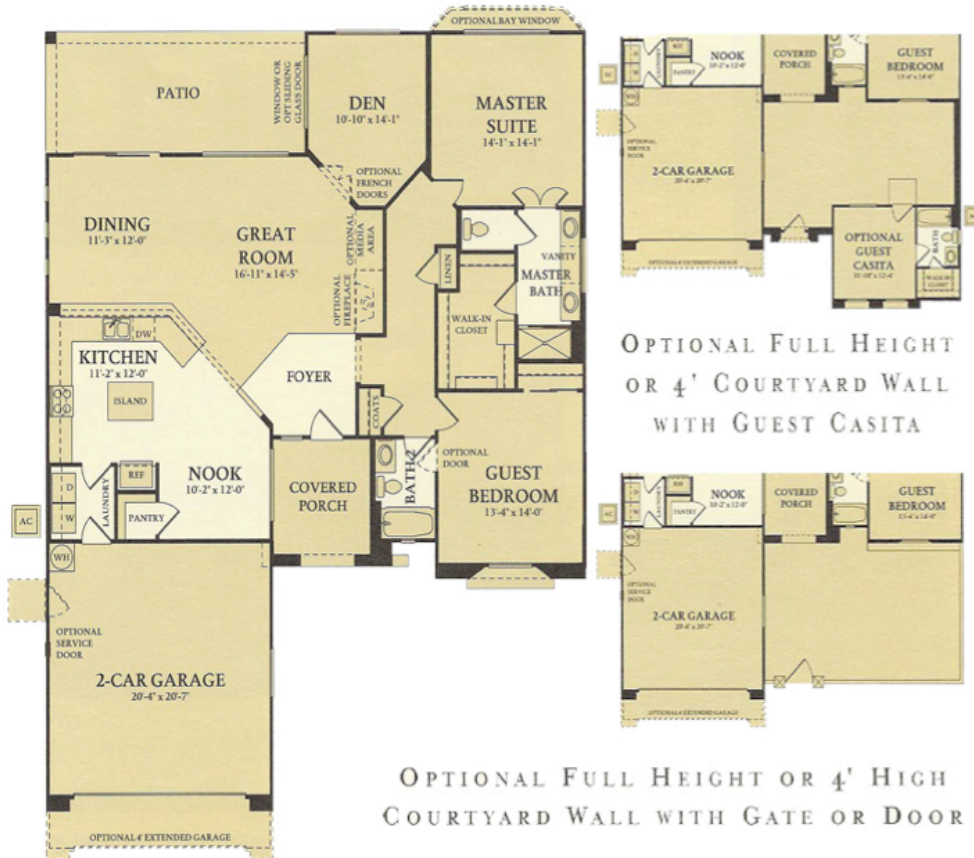


**Corte Bella San Ysidro Floor Plan**

*The San Ysidro*

GREAT ROOM, BREAKFAST NOOK, 2 BEDROOMS, DEN, 2 BATHS,  
2-CAR GARAGE, COVERED PATIO

LIVABLE AREA: 1,811 SQUARE FEET



OPTIONAL FULL HEIGHT  
OR 4' COURTYARD WALL  
WITH GUEST CASITA

OPTIONAL FULL HEIGHT OR 4' HIGH  
COURTYARD WALL WITH GATE OR DOOR