

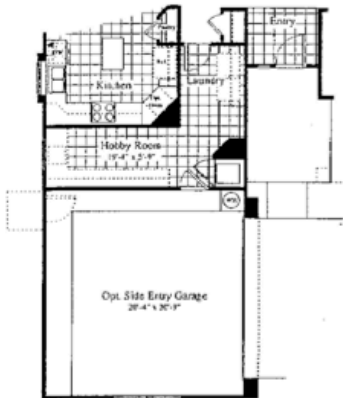
SAN MARCOS

PLAN 9121

1,233 Sq. Ft.

HIGHLIGHTS

- EASY-CARE ARIZONA ROOM
- LARGE MASTER BEDROOM
- LARGE "HIDDEN" KITCHEN WITH ISLAND
- BAY WINDOW IN DINING ROOM
- LARGE COVERED PATIO



Optional Side Entry Garage, Optional Hobby Room, and Optional Wall Oven

OPTIONS

- FIREPLACE
- EXTENDED PATIO
- EXTENDED COVERED PATIO
- DOUBLE DOOR ENTRY
- EXTENDED GARAGE
- SIDE ENTRY GARAGE
- EXTENDED SIDE ENTRY GARAGE
- HOBBY ROOM (WITH SIDE ENTRY OR EXTENDED GARAGE)
- WALL OVEN



Continental

Welcome Home

This floor plan and its architect design are only aerial renderings. Location, size, existence of doors, windows, walls, fireplace, roofed areas and any other item depicted may vary depending on material preference or choice of options. Prices, plans, features and materials are subject to change without notice. All measurements are approximate.

a D. R. Horton Company
1901 Acropolis Blvd.
Suite 100
Arlington, Texas 76006

